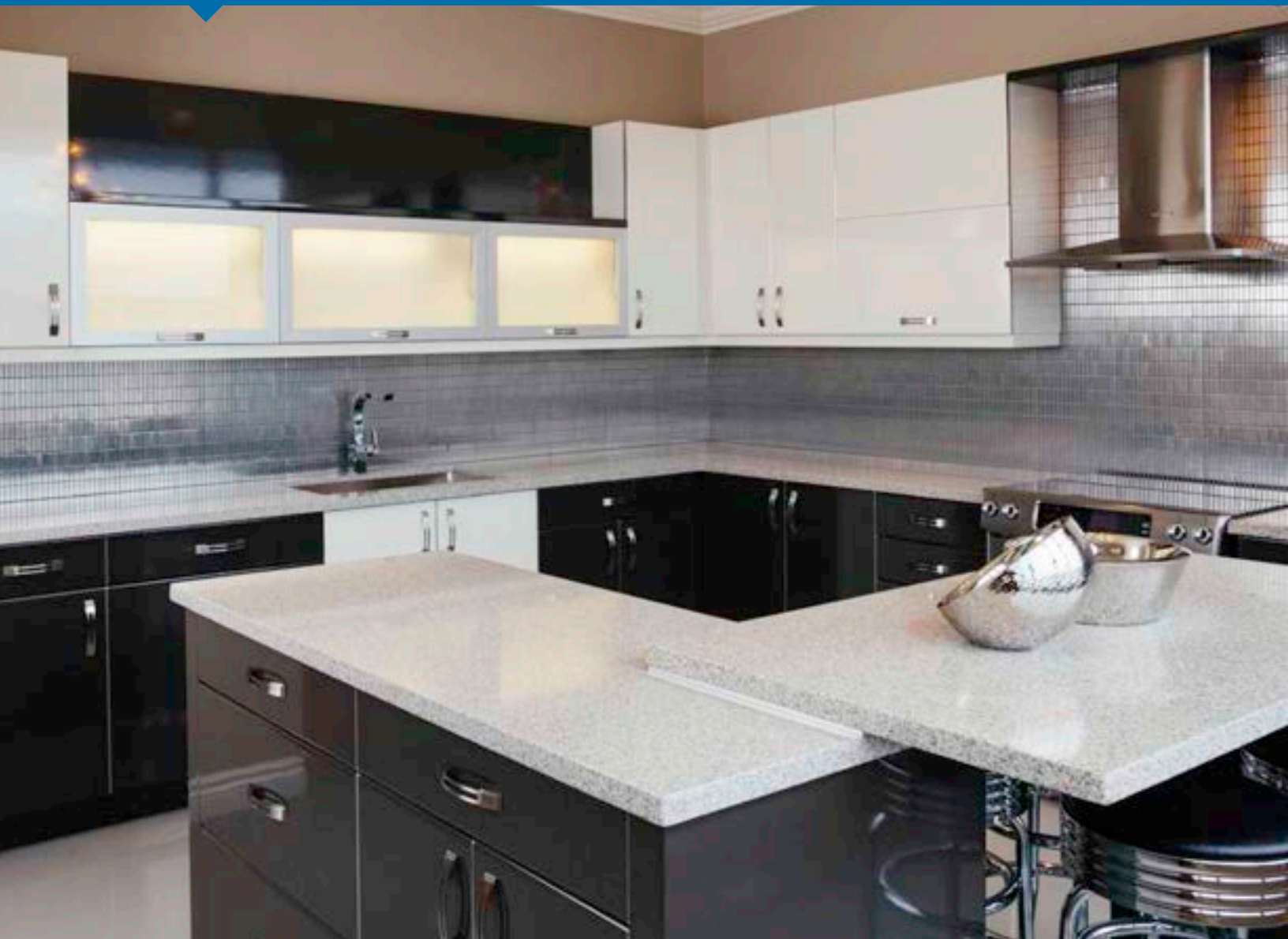


KITCHEN MAINTENANCE AND WARRANTY INFORMATION



FRENDEL[®]
KITCHENS LIMITED

CONGRATULATIONS ON BEING THE PROUD OWNER OF A NEW FRENDEL KITCHEN.

We trust you are already enjoying your new kitchen. To help you protect your investment, we've included some tips for keeping your kitchen looking it's best for many years to come. You'll be pleased to know that your purchase also includes a full two-year warranty against manufacturing defects. Should a problem arise, please don't hesitate to contact our Customer Care department or visit our website.

Again, Thank you for choosing Frenzel Kitchens Limited. 🍷

KITCHEN MAINTENANCE AND WARRANTY INFORMATION

DO'S



CONTROL HUMIDITY



IMMEDIATELY WIPE SPILLS



USE TOUCH UP PUTTY STICKS
AND STAIN PENS



USE MILD SOAP AND DAMP CLOTH



BLOT A PASTE OF BAKING SODA
AND WATER FOR BAD STAINS

DONT'S



AVOID STEAM AND HEAT



AVOID DIRECT SUNLIGHT



AVOID EXCESSIVE WATER



AVOID HARSH CHEMICALS



AVOID ABRASIVE
CLEANING MATERIALS



DON'T CUT DIRECTLY
ON TOP OF LAMINATE
COUNTERTOP

KITCHEN MAINTENANCE AND WARRANTY INFORMATION

PREFACE

EFFECTS OF STRUCTURAL CHANGES IN YOUR NEW HOME

When your new house is being built the structural members and various materials are fitted in place to suit the requirements which exist at the time of construction. Once the house is completed it will start to settle.

The settling may cause structural changes in the house. Structural changes in the building may result in changes in your cabinets and/or countertops — cabinet doors may go out of adjustment, or caulked joints may separate.

Cabinet doors can be adjusted as per instructions which follow.

CARING FOR CABINETS AND DOORS

GENERAL

Use mild soap and a damp cloth to clean your cabinets. Avoid using harsh chemical cleaners such as bleach, ammonia, paint and gum removal solvents, or abrasive materials.

Excess water may damage your cabinets (causing discoloration, peeling or warping). Wipe up excess water immediately.

APPLIANCES

Steam and heat can damage your cabinets. They can warp wood, discolor, delaminate components, peel the finish, leave spots and split joints. In cases of exposure to extreme heat, burn marks or fires could result.

Avoid exposing the upper cabinets to steam from kettles, coffee makers, bottle warmers, rice steamers etc.

Also ensure that your stove top is flush with or above the adjacent countertop ends in order to prevent lifting or separation of the countertop edge. In the case of self-cleaning ovens, it is possible that the heat generated through the sides of the oven can cause damage. It is also possible that if pots boil over and liquid runs down the sides of the stove, the adjacent cabinet sides can sustain damage.



AMBIENT ENVIRONMENT

Smoke, sunlight and humidity can be present and cause damage. High humidity can warp wood, low humidity can cause shrinkage or cracking; also smoke and direct sunlight can discolour finish.

The recommended average residential relative humidity level is between 35% and 45%. This range will provide the best comfort for your family, while helping to protect your kitchen cabinets, musical instruments, drywall, wooden furniture and other belongings or materials from the damaging effects of dryness or excessive moisture.

CARE OF LAMINATE COUNTERTOPS

GENERAL CARE

- Avoid dropping heavy objects on them. Laminate countertops are pretty tough, but the laminate itself can be damaged by a particularly nasty drop. Take care when lifting heavy items onto the counters or over them.
- Never place hot pots or dishes directly from the oven or burner on an unprotected laminate surface; such extreme heat can cause cracking or blistering. As a rule, a maintained temperature of 285°F can discolor a laminate. Contact adhesives typically can be reactivated or soften at around 200°F, which will allow the laminate to pull loose.
- Avoid cuts. Make sure not to cut directly on the surface of laminate counters. Use cutting boards, stones or plates instead to protect the finish and surface of the counters. This practice is required for just about every countertop out there. Using the right cutting techniques not only protects the counters, it also protects the knives.
- Never let water or any other liquid sit on the surface of the countertop. Although the laminate is water resistant, it is not waterproof. After cleaning or wiping down the counter, it is equally important to wipe it down with a cloth to dry the surface. Any joints or finished ends are highly susceptible to water damage as they are a point of entry. Avoid locating coffee makers, steamers on the joints of countertops will result in an uneven joint, as the water will have caused the substrate material to expand creating an undulating surface.
- Don't use harsh chemicals. Harsh chemicals that have acid in the mix do not go well with laminates. Avoid using drain unclogging agents, metal cleaners, ceramic cleaners rust and lime removers and even vinegar and water on or near these counters. Wipe up any spills immediately with water, and dry thoroughly afterwards.

KITCHEN MAINTENANCE AND WARRANTY INFORMATION

LAMINATE COUNTER CLEANING RECOMMENDATIONS

- Simple cleaning. Wipe up these counters with a clean, soft cloth for basic, everyday cleaning. This will help remove surface dust and dirt without damaging finish.
- Tough stains. Mild household cleaners generally work very well on getting stains out. Avoid using harsh abrasive cleansers. Do not use abrasive sponges or steel wool on laminates. For really bad stains, create a paste out of baking soda and water. Blot this up rather than scrubbing and scraping. Take care to wipe up spills as quickly as possible as laminates can stain permanently.

ALIGNMENT OF CABINET DOORS AND DRAWERS

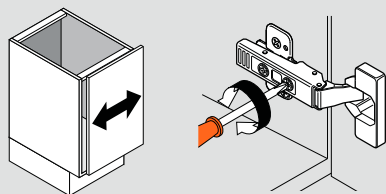
Frendel standard warranty covers initial touch-ups and adjustment of hinges. It is the homeowner's responsibility to readjust hinges to correct misalignment of doors and drawers caused by normal use. The diagrams below illustrate how to easily adjust your hinges using only a phillips head screwdriver.

DOORS

Three-dimensional adjustment

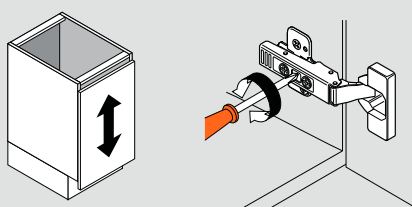
Side adjustment

Rotate front screw to increase or decrease door overlay +/- 2 mm.



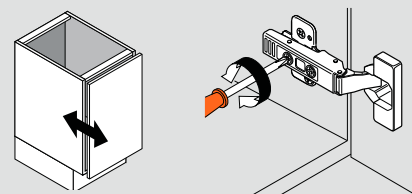
Height adjustment

Rotate cam screw on mounting plate to adjust door position (+/- 2 mm). On non-cam mounting plates, loosen screws, adjust door and retighten screws.



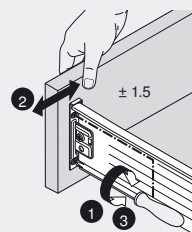
Depth adjustment

Rotate rear Spiral Tech cam screw to adjust door position (+3 mm, -2 mm). For CLIP hinges, loosen rear screws, adjust door and retighten screws.

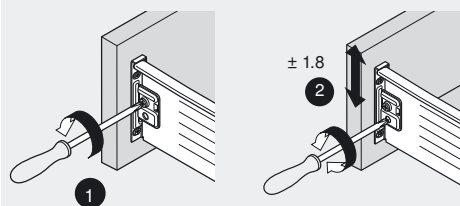


DRAWERS

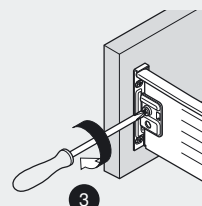
Side Adjustment



Height Adjustment



Tilt Adjustment



Hinges and images provided by **blum**

KITCHEN MAINTENANCE AND WARRANTY INFORMATION

COLOUR MATCHING

WOOD GRAIN

It is quite normal to observe slight colour differences in some areas of your kitchen. Different grains and cuts of wood will accept the same finish in varying ways. The angle of viewing and lighting will also effect colour. What you are actually observing is how the wood itself looks under a uniform coat of finish.

EFFECTS OF SUNLIGHT

Natural sunlight contains Ultra Violet (UV) light rays that may affect the appearance of cabinets. According to the American Society of Testing Materials (ASTM) standards, the actual results in a home will vary depending on these three factors:

Exposure to light (for example, direct from the south, east or west, or indirect from the north)

- The portion of the cabinet that receives the light (top, base, etc.)
- The wood itself. The finish does not change color, the wood itself will.
- Generally, Maple is more susceptible to changes than Oak because it is lighter.
- Maple's natural colour variation is from nearly white to slightly reddish brown, whereas Oak varies from brown to very dark brown.

EXAMPLE OF UV EXPOSURE

The picture below is a facsimile to illustrate the tested effect of 24, 175 and 400 hours of UV exposure equal to that experienced at noon, on a finished maple door



REPLACEMENT BULBS FOR YOUR EXHAUST FAN

Use the form below to purchase replacement bulbs for your Frendel supplied exhaust fan unit.

FAN MODEL	BULB MODEL	WHERE TO BUY
<p>- TurboAir GR13 Aluminum Mesh Grill</p> <p>- Elica EAS529SS Aluminum Mesh Grill</p> 	<p>40-60 Watt E14 European Base</p> <p>*Also referred to as 14mm SES (Small Edison Screw), B10 Bulb Shape</p> 	<p>- Frendel Kitchen and Bath Design Studio (*Filters and Bulbs available while supplies last)</p> <p>- Your local Lighting Specialty Store</p> <p>- Online: Search Google for "E14 European Base B10"</p>
<p>- TurboAir GR13 Stainless Grill</p> 	<p>20 Watt Xenon G4 Base</p> 	<p>- Your local Lighting Specialty Store</p> <p>- Online: Search Google for "20W Xenon G4"</p>

Note that adapter sockets are also available at Amazon to convert the European base sockets on our Italian exhaust fans to more readily available North American chandelier bulbs.

TOUCH UP STAIN PENS AND PUTTY STICKS

Kitchens are the focal point of both family activity and social occasions. There is a lot of traffic in the kitchen every day, and some wear and tear is inevitable.

Frendel Kitchens sells touch up putty sticks and stain pens through the Kitchen and Bath Design Studio. Call 866-373-6335 to order.

SLIDE-IN STOVES, IN-COUNTER COOKTOPS

Prospective home buyers are advised to provide their builder with appliance specifications at time of purchase to ensure that the appliances are accommodated in the kitchen design.

Gas Slide-in Stoves and In-Counter Cook tops must delete countertop backsplash per Ontario Building Code.

Prep for Slide-in Stoves and In-Counter Cook tops will be performed by the Service Department only after the appliance is on the premises to allow verification of actual measurements.

It is the homeowner's responsibility to contact Service at 905-670-7898 to arrange an appliance prep appointment. Allow up to 3 working days for the appointment after the day of contact.



F R E N D E L[®]
K I T C H E N S L I M I T E D

LIMITED WARRANTY CERTIFICATE

Frendel Kitchens warrants, only to the original end-user of the products it manufactures, against material defects and workmanship of its products for a period of two (2) years from either:

a) the date of purchase by the end-user; or (b) the date of installation by an authorized Frendel Kitchens agent (the "Warranty Period").

If a defect should be detected within the Warranty Period, Frendel Kitchens will repair and/or restore its product to the product's original specification(s); or replace the product, at its sole discretion. *

This limited warranty is limited solely to the value of defective Frendel Kitchens products and applies only to those products which are stored, handled and installed in the manner recommended within our guidelines. Frendel Kitchens is not responsible or liable for any indirect, consequential or incidental damages sustained to the product during its use by the user.

RESTRICTIONS

This Warranty does not cover or apply to:

- a) Physical transformations or alterations occurring to the product due to natural, inherent wood characteristics that predispose the product to changes in grain patterns or finish, or other transformations that may arise due to factors which may include, but are not limited to ambient environmental variables such as: sunlight or artificial lighting, extreme temperatures, humidity, poor ventilation, contact with water, and normal wear and tear;
- b) variances in manually applied specialty finishes;
- c) Frendel Kitchens product that has been handled, modified or repaired by persons not employed, approved, or authorized by Frendel Kitchens;
- d) instances where a defect appears or where a repair is required after misuse, abuse, negligence, accidents, improper use or installation, or lack of precaution, care, or normal maintenance during use;
- e) longevity of use of the Frendel Kitchens product;
- f) damage or expenses incurred during removal, shipment and/or installation;

Frendel Kitchens Limited reserves the right to change or alter materials and specifications due to ongoing product development. Material and specification changes compromising aesthetic appeal are not valid reasons for product refusal or replacement under warranty claims. Providing that the product sold is defective, which is to be determined within the terms of this warranty at the discretion of Frendel Kitchens, the original end-user may rely on the warranty by contacting either the dealer or builder from which the product was purchased/acquired by the end-user; or if purchased directly, by contacting Frendel Kitchens Limited. This warranty is hereby the sole warranty given by Frendel Kitchens and no authorized Frendel Kitchens representative is sanctioned to extend the terms of this warranty on its behalf. All other warranties express or implied are hereby excluded from this limited warranty.

This warranty is limited solely to original end-users, which are qualified as initial purchasers of new Frendel Kitchens products from Frendel Kitchens directly, or through its authorized agents or retailers.

**All Blum drawer systems and hinges are covered by a lifetime warranty.*

1350 Shawson Drive
Mississauga, ON
Canada L4W 1C5
www.frendel.com

Telephone	905.670.7898
Fax	905.670.1986
Toll	Free 1.800.641.1201
E-mail	feedback@frendel.com



F R E N D E L[®]
K I T C H E N S L I M I T E D