



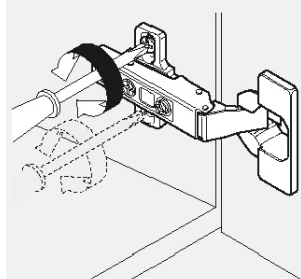
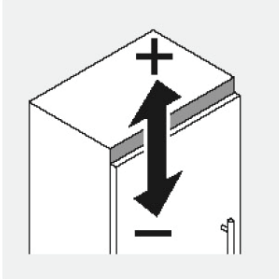
# Section - 12

Care & Maintenance

# Hinges - Adjustment & removal

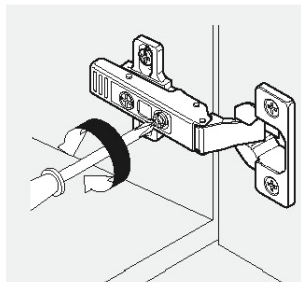
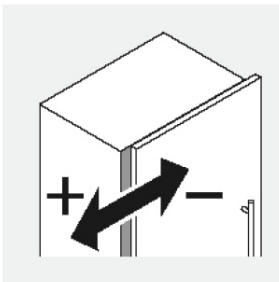
Due to numerous wall and floor variations presented by actual installation situations, it will be necessary to check drawer alignment and make adjustments where necessary once installation is complete. Additional adjustments may be required from time to time.

## Hinge Adjustment: Vertical (up or down)



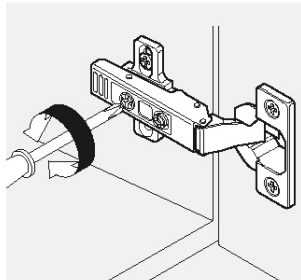
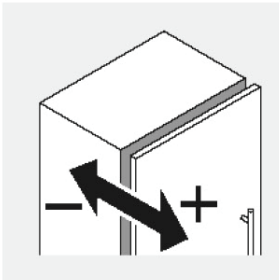
- Use #2 Phillips or #2 POZI driver for all adjustments
- Loosen both screws on each of the hinge plates as shown
- Manually move the door vertically (up or down) into position
- **This part has 1/8" (3mm) of total adjustment**
- Repeat for all hinges until the door is positioned properly
- Tighten all hinge plate screws when adjustments are complete

## Hinge Adjustment: Horizontal (side to side)



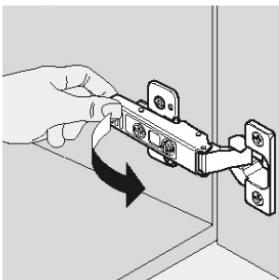
- Use #2 Phillips or #2 POZI driver for all adjustments
- Remove the hinge cover cap from the hinge arm
- Locate the front adjustment screw on the hinge arm as shown
- Turn the screw to adjust the door horizontally (side to side)
- **This part has 1/8" (3mm) of total adjustment**
- Repeat for all hinges until the door is positioned properly
- Replace the hinge cover cap when adjustments are complete

## Hinge Adjustment: Depth (in or out)

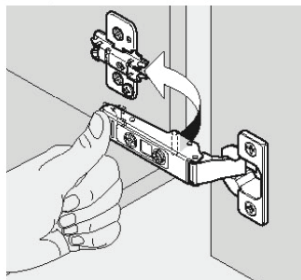


- Use #2 Phillips or #2 POZI driver for all adjustments
- Remove the hinge cover cap from the hinge arm
- Locate the rear adjustment screw on the hinge arm as shown
- Turn the screw to adjust the door depth (in or out)
- **This part has 3/16" (5mm) of total adjustment**
- Repeat for all hinges until the door is positioned properly
- Replace the hinge cover cap when adjustments are complete

## Hinge: Removal



## Hinge: Assembly



### Removal: Tool-Free Removal

- Locate the small release lever on the back of the hinge arm
- Depress the lever and pull the back of the hinge arm forward as shown
- This releases the hinge and door from the mounting plate
- The mounting plate will remain attached to the cabinet
- **To Remove The Hinge From The Door: Use #2 Phillips or #2 POZI driver to remove the 2 screws from the hinge body attached to the door.**
- The two plastic grommets will remain in the door

### Assembly: Tool-Free Assembly

- Bring the hinge and door to the mounting plate
- The front of the hinge arm fits onto the grooved front of the mounting plate
- Press the back of the hinge arm onto the mounting plate until a "click" is heard
- The hinge and door will now be locked onto the mounting plate.

## Hinge: Cleaning

All hinges are coated with a light protective oil from the manufacturer. This protective film is to ensure that the customer will have years of maintenance-free operation of the product.

**Cleaners are not recommended for use on these parts as removal of the protective coating may result.**

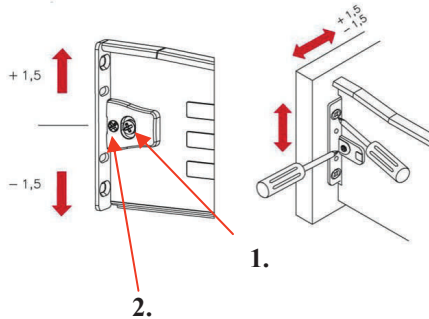
When the hinge parts require cleaning it is recommended that these parts be wiped with a dry cloth.

**All water must be removed immediately.**

# Drawer Adjustment - Standard

Due to numerous wall and floor variations presented by actual installation situations, it will be necessary to check drawer alignment and make adjustments where necessary once installation is complete. Additional adjustments may also be required from time to time.

## Vertical-up down adjustment

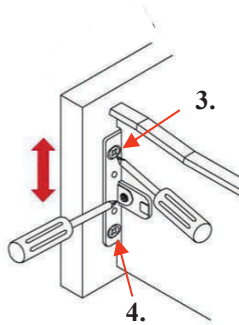


### Use #2 Phillips or #2 POZI driver for all adjustments

- All adjustments can be made with the drawer in the cabinet
- Loosen the drawer side fixing screw as shown in #1 (do not remove screw), this is the screw closest to the white drawer side toward the interior of cabinet
- Adjust the front up or down by turning the cam adjust screw which is directly in front of the above mentioned screw and is closest to the drawer front.
- There is approximately 1/16" (1.5mm) up and down adjustment for a total of 1/8" (3mm)
- Repeat for other side until the drawer front is positioned properly
- Tighten all screws when adjustments are complete



## Horizontal-side to side adjustment



### Use #2 Phillips or #2 POZI driver for all adjustments

- All adjustments can be made with the drawer in the cabinet
- Loosen the top drawer front mounting screws as shown in #3.
- Loosen the bottom screw next #4, do not remove screws
-

# Cleaning Guidelines: Care and Maintenance

**The following cleaning guidelines should be followed when cleaning your Paris Kitchen.**

**As a general note for all Finish Categories: All liquids and spills should be wiped up immediately.**

## **“N” Melamine: Cleaning**

### **Use:**

A soft cloth with mild non-abrasive soap and water.

Use cleaning solutions sparingly and ensure that all cleaned areas are rinsed and dried thoroughly.

### **Do Not Use:**

Acidic or alkaline based products or abrasive cleaners.

Do not allow oven cleaners or other caustic cleaners to touch the cabinets.

Never use abrasive scouring pads, steel wool or sandpaper.

### **Note:**

All liquids and spills should be wiped up immediately.

After manufacturing it may be necessary to clean your “N” products. Lacquer thinners may be used on some “N” products. Test a small inconspicuous area first. Only use lacquer thinners under well-ventilated conditions while following all of the manufacturers’ instructions. **Continued use of solvent cleaners is not recommended.**

When cleaning, caution should be taken with excessive scrubbing/rubbing in one area. The gloss level will increase the longer these actions occur.

## **“T” Thermofoil: Cleaning**

### **Use:**

A soft cloth with mild non-abrasive soap and water.

Use cleaning solutions sparingly and ensure that all cleaned areas are rinsed and dried thoroughly.

### **Do Not Use:**

Solvent based cleaners such as lacquer thinners, abrasive cleaners, any products that contain acetone or any oil based cleaners.

Do not allow oven cleaners or other caustic cleaners to touch the cabinets.

Never use abrasive scouring pads, steel wool or sandpaper.

### **Note:**

All liquids and spills should be wiped up immediately.

Due to extremely high temperatures created by self cleaning ovens, it is recommended that the doors and drawers be removed from the cabinets on either side of the oven before the self cleaning mode is activated.

When cleaning, caution should be taken with excessive scrubbing/rubbing in one area. The gloss level will increase the longer these actions occur.

## **“B” Exotic Wood Grain Matte: Cleaning**

### **Use:**

A soft cloth with mild non-abrasive soap and water.

After cleaning with the mild soap solution the surface may have streaks. Use clean warm water and a soft cloth to remove these streaks.

Use cleaning solutions sparingly and ensure that all cleaned areas are rinsed and dried thoroughly.

### **Do Not Use:**

Acidic or alkaline based products, abrasive cleaners.

Do not allow oven cleaners or other caustic cleaners to touch the cabinets.

Never use abrasive scouring pads, steel wool or sandpaper.

### **Note:**

All liquids and spills should be wiped up immediately.

When cleaning, caution should be taken with excessive scrubbing/rubbing in one area. The gloss level will increase the longer these actions occur.

# Cleaning Guidelines: Care and Maintenance

## **“V” Stain, Wash and Glaze: Cleaning**

### **Use:**

A soft cloth with mild non-abrasive soap and water.

Use cleaning solutions sparingly and ensure that all cleaned areas are rinsed and dried thoroughly.

### **Do Not Use:**

Acidic or alkaline based products, abrasive cleaners, products containing silicone or paste waxes.

Do not allow oven cleaners or other caustic cleaners to touch the cabinets.

Never use abrasive scouring pads, steel wool or sandpaper.

### **Note:**

All liquids and spills should be wiped up immediately.

When cleaning, caution should be taken with excessive scrubbing/rubbing in one area. The gloss level will increase the longer these actions occur.

## **“D” Exotic Wood Grain Gloss: Cleaning**

### **Use:**

**Do not clean this product with any dry cloth as this may leave scratches.**

A microfiber cloth dampened with the proper cleaning solution is highly recommended to clean this product. A very soft cloth with mild non-abrasive soap and water. Vinegar and water are also recommended cleaning solutions.

Use cleaning solutions sparingly and ensure that all cleaned areas are rinsed and dried thoroughly.

### **Do Not Use:**

Any abrasive cleaners.

Do not allow oven cleaners or other caustic cleaners to touch the cabinets.

Never use abrasive scouring pads, steel wool or sandpaper.

### **Note:**

All liquids and spills should be wiped up immediately.

When cleaning, caution should be taken with excessive scrubbing/rubbing in one area as this may leave scratches on the finish.

Always use the recommended cleaning products. This will ensure that the gloss finish will be maintained for years.

## **“E” Matte Enamel and Glazed: Cleaning**

### **Use:**

A soft cloth with mild non-abrasive soap and water.

Use cleaning solutions sparingly and ensure that all cleaned areas are rinsed and dried thoroughly.

### **Do Not Use:**

Acidic or alkaline based products, abrasive cleaners, products containing silicone or paste waxes.

Do not allow oven cleaners or other caustic cleaners to touch the cabinets.

Never use abrasive scouring pads, steel wool or sandpaper.

### **Note:**

All liquids and spills should be wiped up immediately.

When cleaning, caution should be taken with excessive scrubbing/rubbing in one area. The gloss level will increase the longer these actions occur.

## **“A” Antiqued: Cleaning**

### **Use:**

A soft cloth with mild non-abrasive soap and water.

Use cleaning solutions sparingly and ensure that all cleaned areas are rinsed and dried thoroughly.

### **Do Not Use:**

Acidic or alkaline based products, abrasive cleaners, products containing silicone or paste waxes.

Do not allow oven cleaners or other caustic cleaners to touch the cabinets.

Never use abrasive scouring pads, steel wool or sandpaper.

### **Note:**

All liquids and spills should be wiped up immediately.

When cleaning, caution should be taken with excessive scrubbing/rubbing in one area. The gloss level will increase the longer these actions occur.



## PARIS KITCHENS LIMITED 1 year WARRANTY

Paris Kitchens' products are warranted to the original purchaser to be free from defects in materials and workmanship for a period of one (1) year from date of shipment under normal use conditions. Any part found to be defective as such will be replaced or repaired at no charge.

The warranty applies to the repair or replacement of defective product and does not include expenses incurred in the removal, shipment or installation of the product; nor does it apply in the case of normal wear and tear, contact with water, misuse, abuse, improper storage, improper installation and/ or exposure to extremes in temperature or humidity of Paris products.

The Paris warranty only applies to defects and does not apply to natural wood features that are inherent in wood species or artistic discretion in hand-applied specialty finishes. This warranty does not cover unfinished product. This warranty is in lieu of all other implied or expressed warranties.

To facilitate ongoing product development, Paris reserves the right to change materials and specifications without prior notification. Material and specification changes are not valid reasons for product refusal or replacement under warranty claims.

### **Beauty...**

but not perfection.

It must be remembered that **"nature creates, it never duplicates"**. All natural products are affected by the environment in which they are grown, and wood is no exception. The amount and quality of moisture, soil, weather and climate conditions are all elements that affect the properties and characteristics of wood. Because of the variation in grain and colour tone, no two pieces of wood are identical. Grain variations and natural marks are characteristic and part of the natural beauty of wood and should not be considered a reason for replacement. The selection processes for the construction of our wood doors have been developed to bring out the natural beauty of the wood. Finishes have also been developed to ensure more durable surfaces.