

26'  
LOTS

# The Ashberry (26-2)

ELEVATION **A** - 4 BEDROOM - **2,240** SQ. FT.  
ELEVATION **B** - 4 BEDROOM - **2,237** SQ. FT.  
ELEVATION **C** - 4 BEDROOM - **2,230** SQ. FT.



# The Ashberry

(26-2)

ELEVATION A  
4 BED – 2,240 SQ. FT.

ELEVATION B  
4 BED – 2,237 SQ. FT.

ELEVATION C  
4 BED – 2,230 SQ. FT.



ELEVATION A



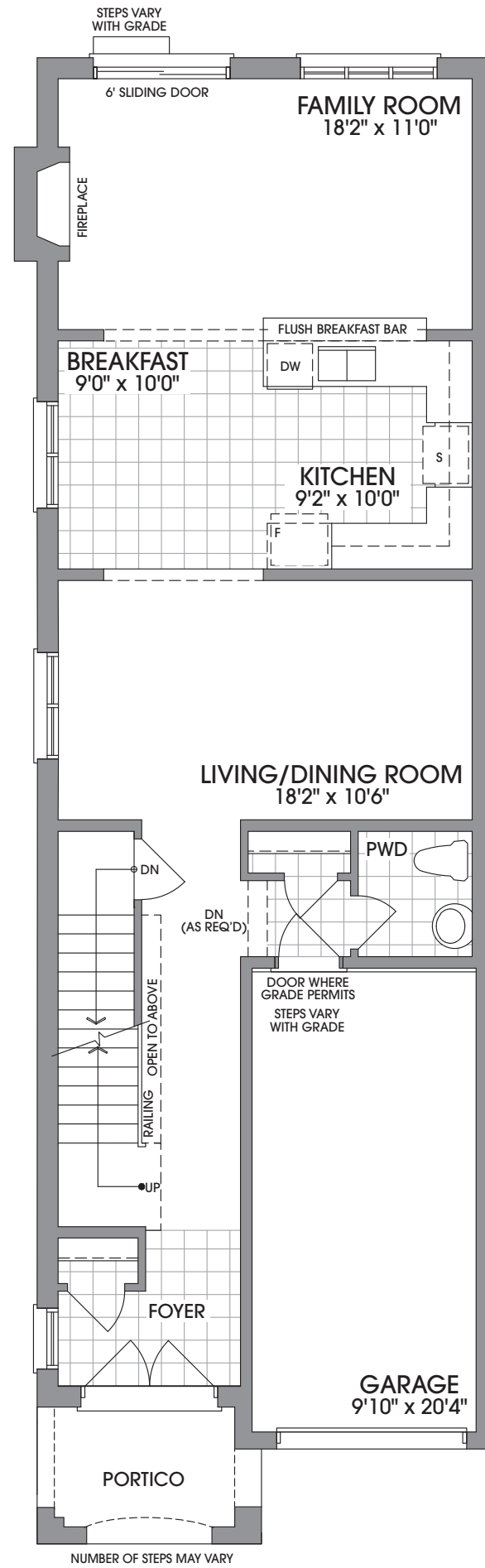
ELEVATION B



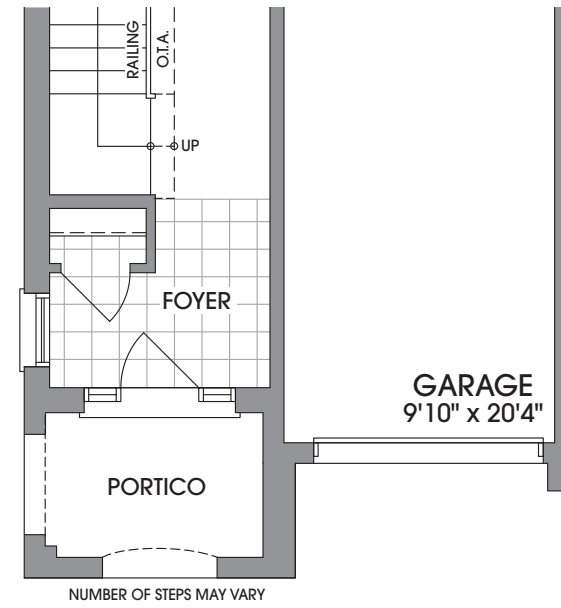
ELEVATION C

*The Trails*  
of  
COUNTRY LANE

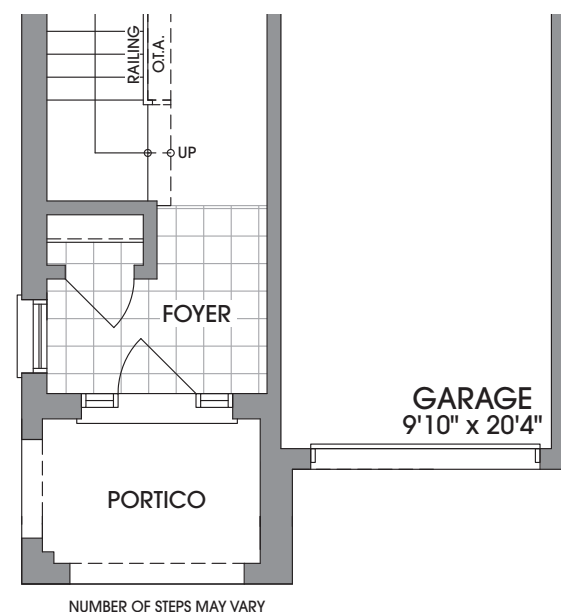
26'  
LOTS



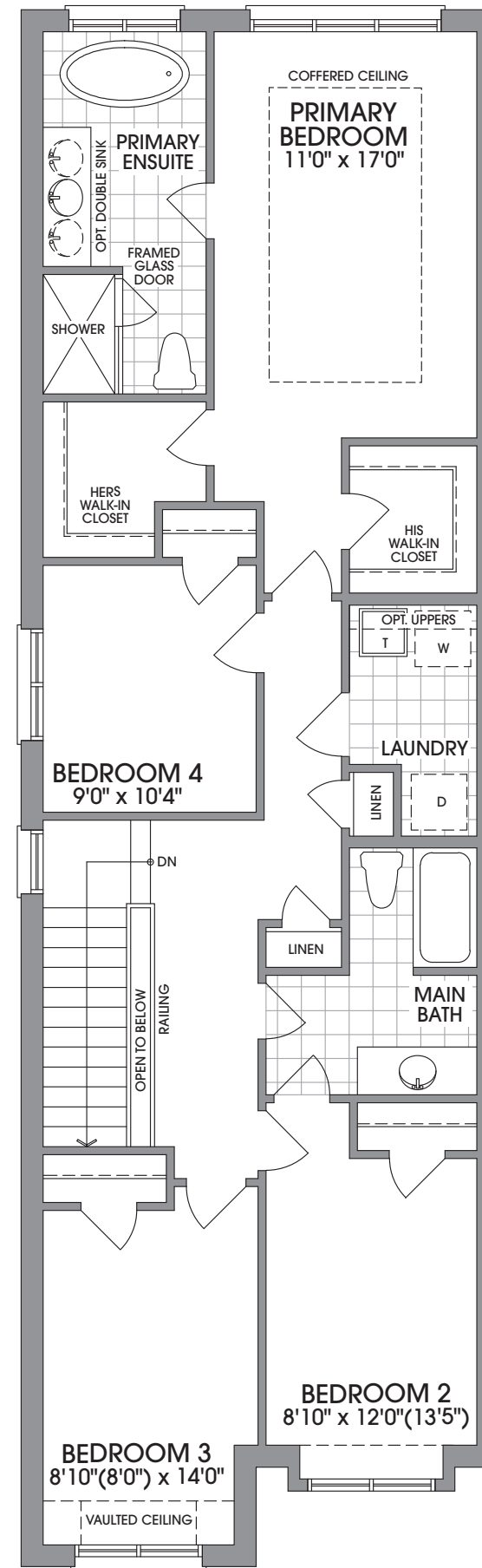
MAIN LEVEL  
ELEVATION A



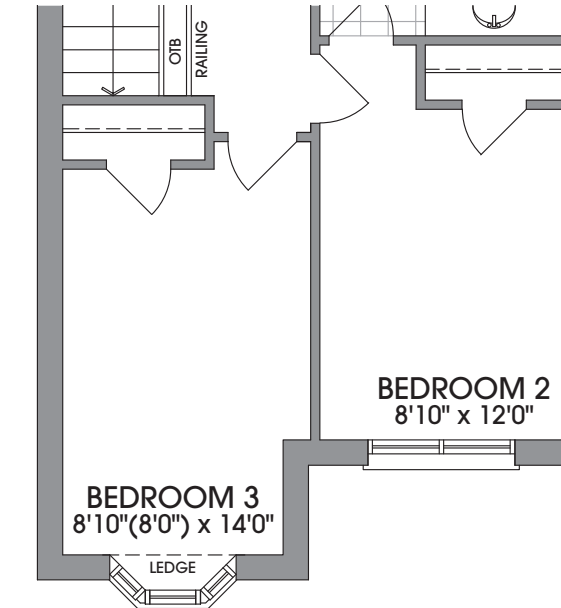
MAIN LEVEL  
ELEVATION B



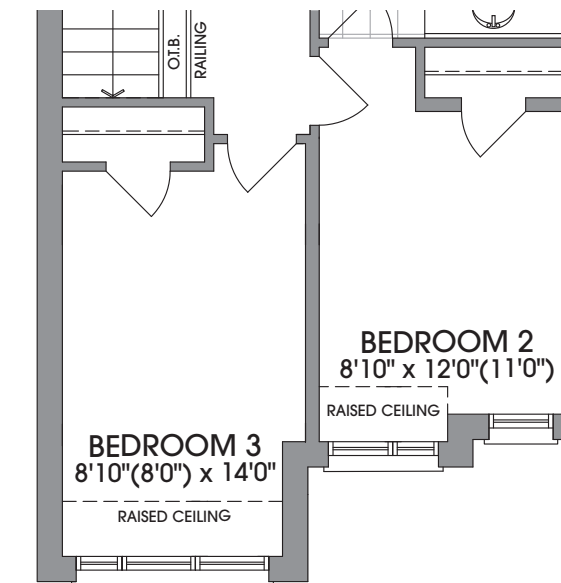
MAIN LEVEL  
ELEVATION C



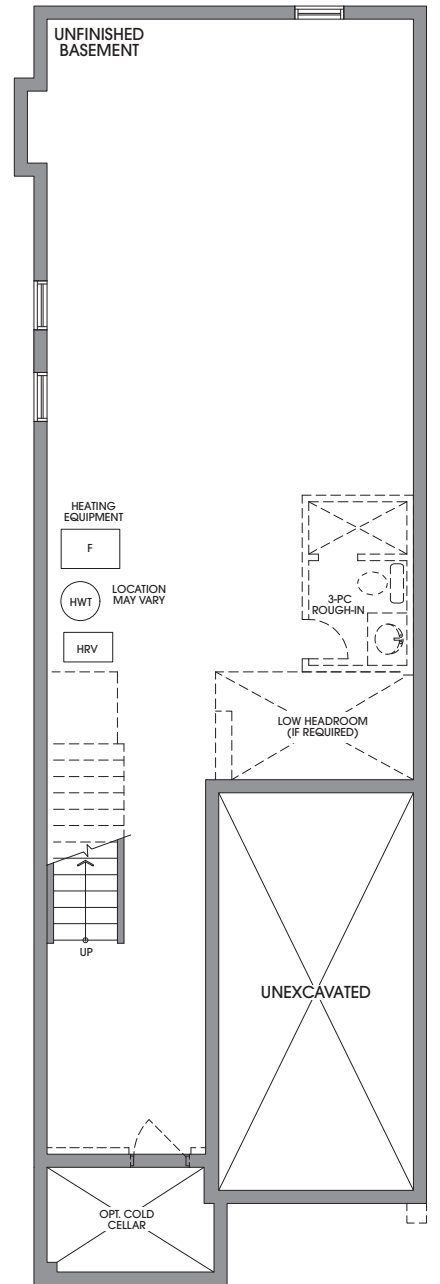
UPPER LEVEL  
ELEVATION A



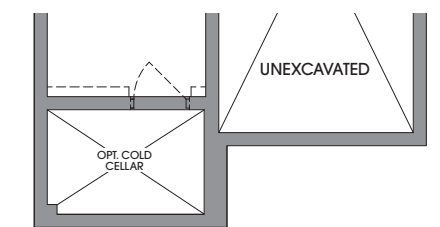
UPPER LEVEL  
ELEVATION B



UPPER LEVEL  
ELEVATION C



BASEMENT  
ELEVATION A & B



BASEMENT  
ELEVATION C

**FLOORPLANS & ELEVATIONS ARE FINAL AND NOT SUBJECT TO CUSTOMIZATION AT TIME OF SALE OR THROUGH THE DECOR STUDIO** Floorplans and elevations are not to scale and subject to architectural review/revision including without limitation, the house being constructed with a layout that is the reverse of that set out above. All materials, specifications, details and dimensions, if any, are approximate and subject to change without notice in order to comply with building site conditions and municipal, structural, Vendor and/or architectural requirements. Actual usable floor area may vary from the stated floor area in accordance with the Floor Area Calculations Directive dated February 1, 2021 published by the Housing Construction Regulatory Authority. Location of structural and mechanical elements may vary from what is shown. Bulkheads are not shown on this plan and may be in areas of the Unit as required to provide venting and mechanical systems. Door and window location, type, size, and swing may vary without notice. Homes are sold unfurnished. If applicable, balconies, terraces, and patios, if any, are exclusive use common elements, shown for display purposes only and the location and size are subject to change without notice. E. & O.E. 20230512\_IFS

