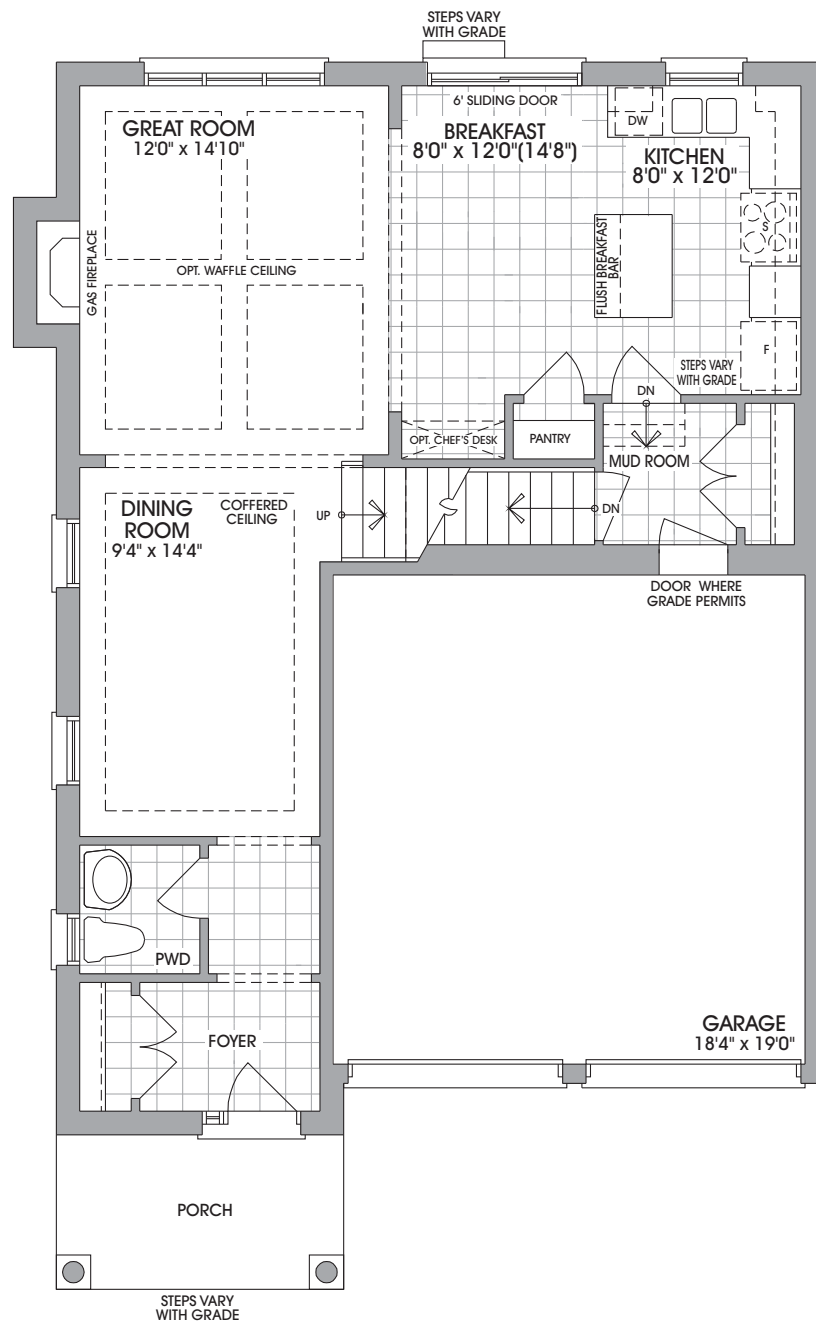


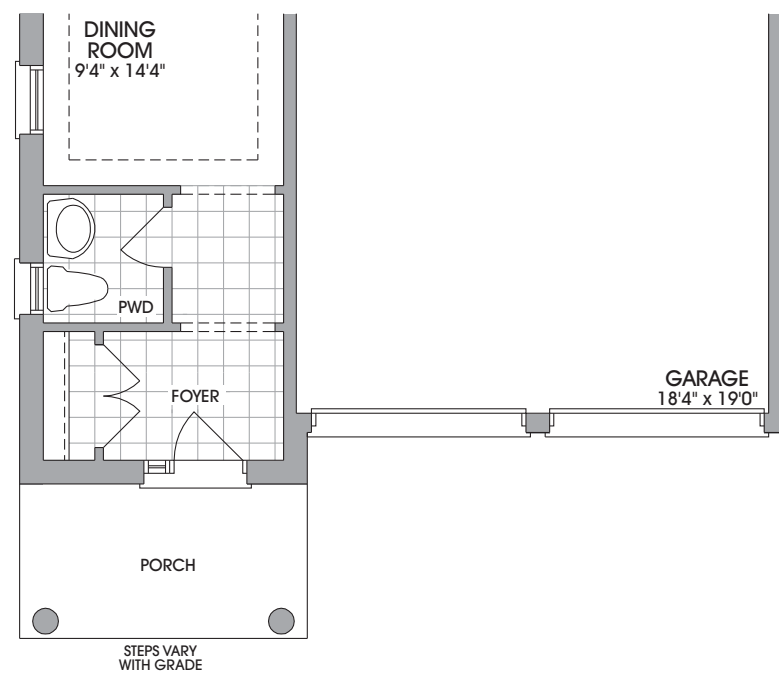
The Southgate

Elevation A ~ 1,954 Square Feet
Elevation B ~ 1,963 Square Feet

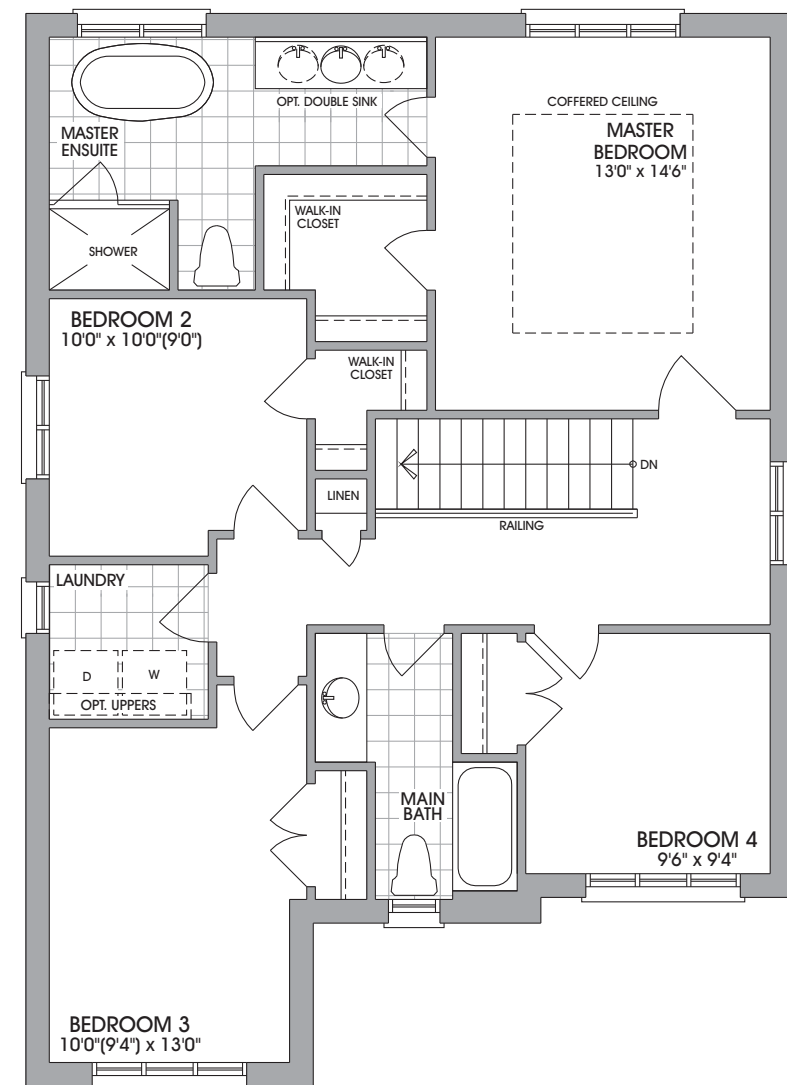
38'
SINGLES



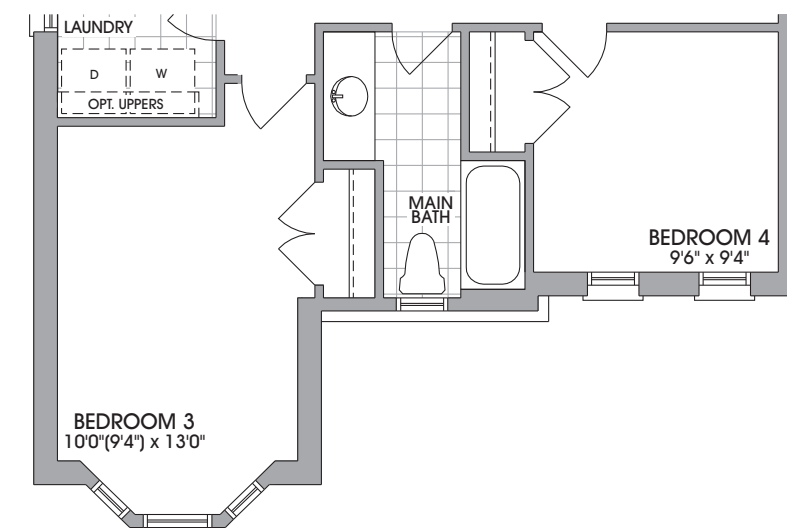
MAIN LEVEL ELEVATION A



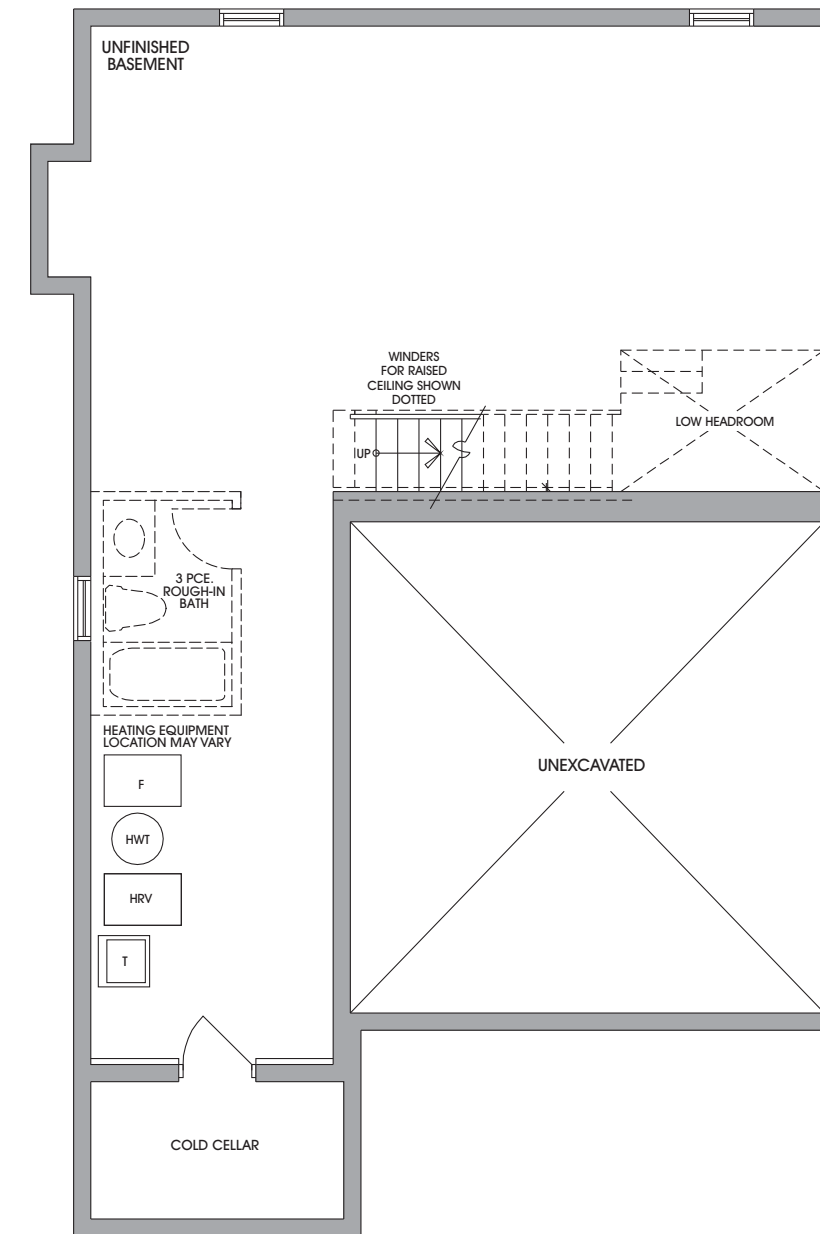
MAIN LEVEL ELEVATION B



UPPER LEVEL ELEVATION A



UPPER LEVEL ELEVATION B



BASEMENT ELEVATION A & B



Elevation A ~ 1,954 Square Feet



Elevation B ~ 1,963 Square Feet